

unidrain®

2011

"It's not difficult
getting water out
of the shower.

But the art is in
how it's done."

Claus Dyre, designer and founder of Unidrain



The Danish Design Prize
2010/11



Award winning originality

HighLine Panel Corian® Hot with frame

Unidrain – Elegant floor drain

In 2003, Unidrain was the first company in the world to develop a line drain to be placed up against the wall, doing away with the square grating in the middle of the floor.

From the outset, architects, trade professionals and others with a flair for interior design have shown great enthusiasm for Unidrain's simple and beautiful design.

The idea behind Unidrain is simple. The floor drain is moved up against the wall, in a watertight connection – and it is here that the art comes in.

Having worked with bathroom renovations for many years, designer Claus Dyrre would come across the same problem again and again – the problem of having to cut a beautiful floor tile into pieces to make space for the floor drain.

Working with the Danish Building Research Institute (SBI), he designed an elongated floor drain with a single-sided slope, which could be elegantly positioned away from the floor of the shower stall. At the same time, he developed an integrated wall flange, which would ensure that the unit was fully watertight once fitted.

In the space of just a few years, Unidrain has revolutionised the building industry and made the floor drain a design element in the elegant bathroom. Today, Unidrain has been installed in over 300,000 private homes, hotels and public buildings.

Two ranges to choose from: ClassicLine and HighLine, both with a wide range of design solutions to ensure that there is a floor drain for every taste.

Facts

Unidrain has received several international design awards, including the iF product design award 2010

and most recently The Danish Design Prize 2010/11 for the HighLine range.



product
design
award

2010



The Danish Design Prize
2010/11


Customized perfection



HighLine line drain: unique design with endless possibilities

No matter whether the drain in the bathroom is to grab your attention or be as good as invisible.

HighLine is the exclusive and unique solution for any bathroom.

 HighLine Cassette with frame



HighLine Panel without frame

Panel; Brushed stainless steel
Shown without frame

Length model: 300–1200 mm.
For lengths over 1200 mm,
refer to the Modul 1100 range.

HighLine; Three
unique solutions

Panel; Corian® Nocturne
Shown with frame

Cassette
Shown with frame

Panel; Corian® Hot
Shown with frame

Custom
Shown without frame

Facts

In HighLine, the traditional grating has been replaced by three alternative solutions: Panel, Cassette and Custom.

Panel is a solution in stainless steel or Corian®. With Cassette and Custom, the floor tile can be cut and mounted in the floor drain to make it almost "invisible".

Supplied with or without frame.



HighLine Custom without frame



ClassicLine line drain; functional minimalism

Simplicity and clean lines.

ClassicLine is the simple range in sleek brushed stainless steel. Five different grating designs ensure that there is something for every taste.



ClassicLine
with Stripe grating



Simple,
sleek design

ClassicLine
with Column grating



ClassicLine
with Classic grating

Facts

ClassicLine line drain comes in five grating designs in brushed stainless steel.

Supplied with frame.

ClassicLine;
five sleek designs

Length model: 300 – 1200 mm.
For lengths over 1200 mm,
refer to the Modul 1100 range.

Grating: Inca



Grating: Classic



Grating: Square



Grating: Column



Grating: Stripe





Functional design for the smaller bathroom

ClassicLine
with Column grating

Soap shelf in four designs



Classic design



Column design



Classic design



Column design

ClassicLine corner drain; compact minimalism

The corner drain is the simple solution for bathrooms with limited space.

A compact solution ideal for renovation projects and older properties.



ClassicLine
with Classic grating

Facts

ClassicLine corner drain comes in two grating designs in brushed stainless steel.

Supplied with frame.

ClassicLine;
two sleek designs

Length model: 200 mm.
Only takes up 170 x 170 mm
of the finished floor.



ClassicLine soap shelf; perfect minimalism

With an elegant soap shelf to match the floor drain, your dream of a perfect bathroom is complete.

ClassicLine Soap Shelf comes as a complete set, which is fixed to the wall in a corner.

Modul 1100 line drain; extra long floor drain

Modul 1100 is the flexible solution which optimally adapts the floor drain to the individual bathroom, up to several metres in length, e.g. exclusive private bathrooms, wellness, sports, school and hotel facilities.

Modul 1100 can be designed as a HighLine or ClassicLine solution.



Facts

Modul 1100 is a floor drain of over 1200 mm in length.

The solution allows the possibility of producing a longer floor drain for larger bathrooms, and consists of components which are welded together to achieve the desired length and construction.



Position; up against the wall



Shower stall with three walls
(ClassicLine with Stripe grating)



Shower stall with two walls
and open/glass wall on right
(ClassicLine with Stripe grating)



Shower stall with two walls
and open/glass wall on the left
(ClassicLine with Column grating)



Shower stall/bathroom
with distance to side wall
(ClassicLine with Classic grating)

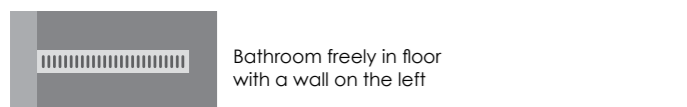


Corner shower stall
(ClassicLine with Column grating)

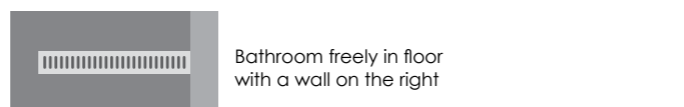


Shower stall/bathroom
with floor drain over 1200 mm
(ClassicLine with Stripe grating)

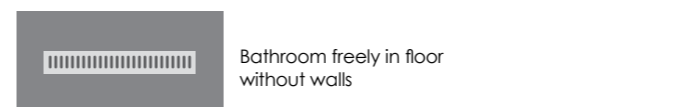
Position; in floor



Bathroom freely in floor
with a wall on the left



Bathroom freely in floor
with a wall on the right



Bathroom freely in floor
without walls

This is how you buy a Unidrain

With just a few considerations, this list helps to provide an overview, when a professional is to be involved.

1. Select position;

- Up against wall
- In the floor

2. Select length;

- The width of the shower stall in mm

3. Select range;

- HighLine
- ClassicLine

4. Select panel/grating;

- | | |
|-----------------------------------|----------------------------------|
| HighLine: | ClassicLine: |
| <input type="checkbox"/> Panel | <input type="checkbox"/> Classic |
| <input type="checkbox"/> Cassette | <input type="checkbox"/> Column |
| <input type="checkbox"/> Custom | <input type="checkbox"/> Inca |
| | <input type="checkbox"/> Square |
| | <input type="checkbox"/> Stripe |

5. Select frame;

- | | |
|----------------------------------------|----------------------------------------------|
| HighLine: | ClassicLine: |
| <input type="checkbox"/> With frame | <input type="checkbox"/> Supplied with frame |
| <input type="checkbox"/> Without frame | |

6. Select outlet unit;

Consult a professional for advice on the outlet unit.

List of products

Product parts

Unidrain is an intelligent and functional solution with just four parts and, as with all good systems, the whole is greater than the sum of its parts.

How the parts are put together is determined by the position of the floor drain, the size of the shower and your interior design wishes.

Unidrain's four parts:

- 1. Drain unit**
Up against the wall or freely in the floor
- 2. Outlet unit**
In several outlet dimensions and directions
- 3. ClassicLine or HighLine frame**
In several heights
- 4. ClassicLine grating or HighLine panel**
In different designs

Unidrain HighLine



HighLine panel
Line: Three solutions to choose from: Panel, Cassette or Custom

HighLine frame
Line: Length model 300 – 1200 mm
H: 10, 12, 15, 25 mm
(the frame is optional)

Drain unit
Line: Length model 300 – 1200 mm
(over 1200 mm refer to Modul 1100)

Outlet unit
A wide range to choose from

Unidrain ClassicLine



ClassicLine grating
Line: Five designs to choose from: Classic, Column, Inca, Square, Stripe
Corner: Two designs to choose from: Classic, Column

ClassicLine frame
Line: Length model 300 – 1200 mm
Corner: length model 200 mm
H: 8, 10, 12 mm
(the frame is obligatory)

Drain unit
Line: Length model 300 – 1200 mm
(over 1200 mm refer to Modul 1100)
Corner: length model 200 mm

Outlet unit
A wide range to choose from

Building technique

Simple! Safe! Convincing!

When you choose Unidrain, you are choosing a unique solution which is both easier and faster to work with than other products on the market.

We were the first to move the floor drain right up against the wall for a solution with a single-sided slope – and simple, precise and watertight installation.

As a result, the floor is completely level. This makes it easier to lay large tiles, as cutting around the drain is not necessary.

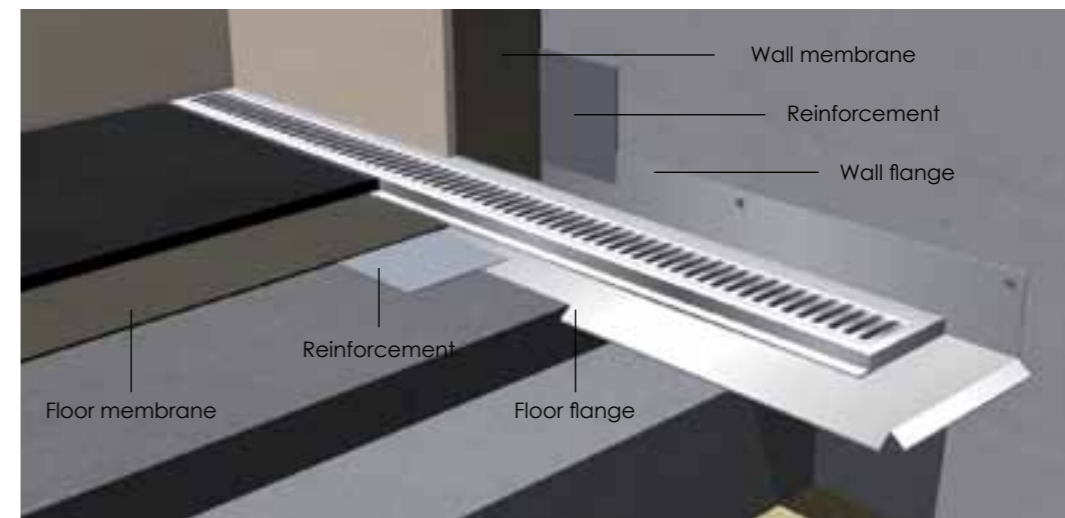
Unidrain is positioned up against the wall, and the fact that it is fastened to the wall ensures that the patented vertical wall flanges completely overlap the walls' membrane for a fully watertight installation.

In the same way, the horizontal floor flanges ensure that the floor is watertight by overlapping the floor membrane.

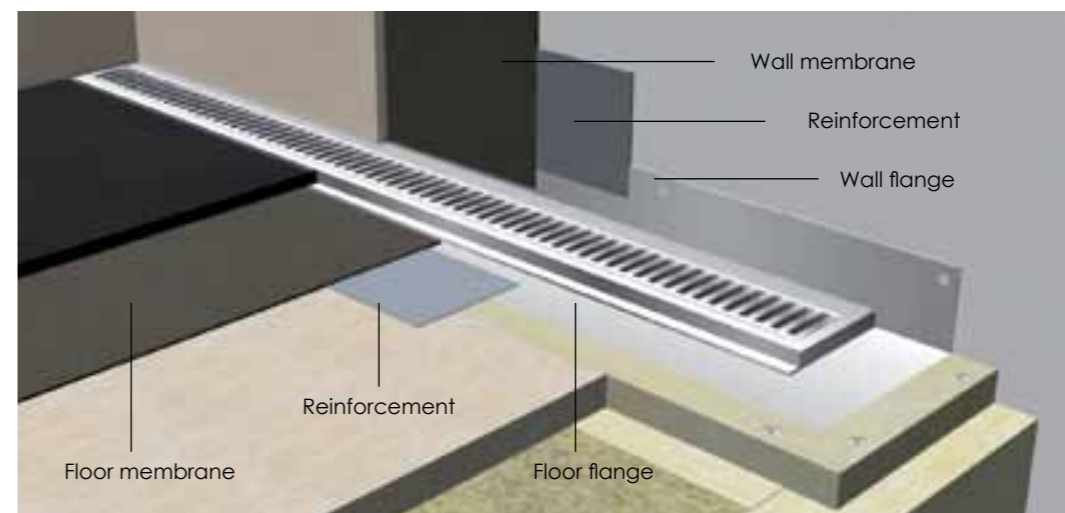
Unidrain has been tested and approved for installation in all types of floor constructions for wet rooms – both heavy construction in concrete and lightweight construction in wooden joists. For installation in wooden joists and other lightweight floor constructions, the Unidrain Mounting Set is recommended.

Find out more about building technique in Unidrain's building instructions enclosed with the product or contact a professional for advice and guidance.

Concrete



Wooden joist with floor sheet



Find more inspiration at

unidrain.dk

Here you can also download or order our main technical catalogue and obtain further technical information, documentation and drawings..

Please call Unidrain's customer service department for guidance, helpful advice or answers to technical questions on tel.:
+45 3910 1030
or write to Unidrain at
info@unidrain.dk



unidrain®

Unidrain A/S
Farum Gydevej 71
DK-3520 Farum

T +45 3910 1010
T +45 3910 1030 customer service
F +45 3910 1020
info@unidrain.dk
www.unidrain.dk